

Multiple Choice

Study the Utah County weather data chart below and answer the next two questions.

Weather Data

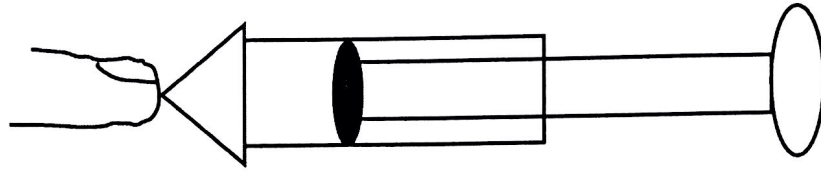
	Monday	Tuesday	Wednesday	Thursday	Friday
Temperature	93 ° F	87 ° F	82 ° F	80 ° F	95 ° F
Air Pressure	30 "	30 "	29 "	28 "	30 "
Wind	5 mph	15 mph	25 mph	10 mph	5 mph
Clouds	clear	partly cloudy	partly cloudy	cloudy	clear

1. On which day will it most likely rain?
 - A. Monday
 - B. Tuesday
 - C. Wednesday
 - D. Thursday

2. Which month of the year might this be?
 - A. January
 - B. March
 - C. June
 - D. November

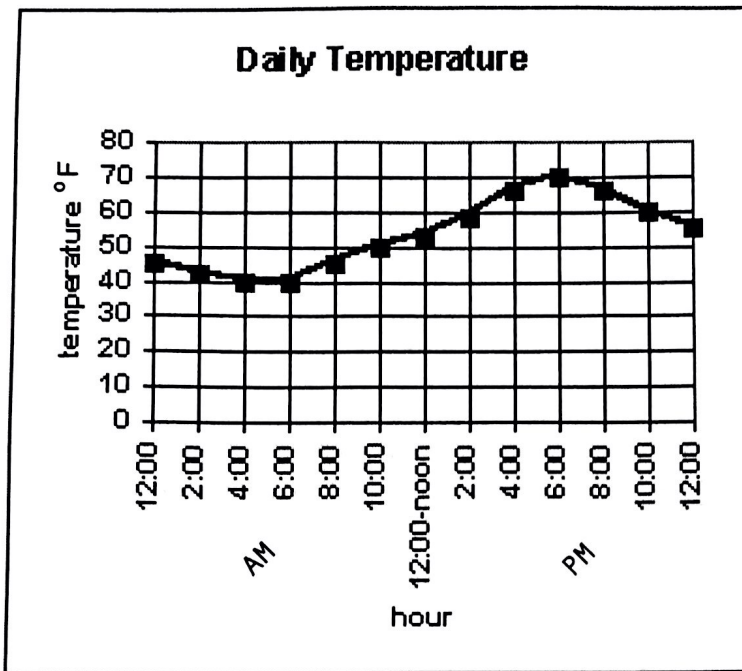
3. A storm is approaching your town. What kind of clouds, temperature, and precipitation can you expect?
 - A. cirrus clouds, lower temperatures and rain
 - B. cirrus clouds, higher temperatures and rain or snow
 - C. cumulus clouds, no temperature change and no rain
 - D. stratus clouds, low temperatures and rain

4. The end of a syringe like the one pictured below can be closed with a finger. When the plunger is pushed, it will only go part way. Why?



- A. The plunger gets stuck
B. The syringe is full of air
C. Friction on the sides
D. Gravity stops it
5. Temperature and wind speed are measurements of what substance?
- A. air
B. rock
C. water
D. weather
6. Precipitation becomes snow when...
- A. the clouds get closer to Earth
B. the clouds get darker
C. air temperature gets colder
D. the wind blows
7. What do cirrus clouds often predict?
- A. fair weather
B. a storm
C. no change in weather
D. low or no wind
8. A calm, cloudless day with little wind usually means the next day will have what kind of weather?
- A. the same
B. rain
C. severe weather
D. colder, fewer clouds

Use this graph to answer the next two questions.



9. Which time of day is the warmest?

- A. morning
- B. noon
- C. late afternoon
- D. after dark

10. What activity would this graph help you plan?

- A. when to have dinner
- B. what time to wake up
- C. when to do your homework
- D. what time to be outdoors

11. Several days with strong winds from the south usually mean...

- A. it will stay the same
- B. clear skies
- C. hot weather is coming
- D. a storm is likely

Constructed Response

1. Write down what type of clouds are represented by each picture:

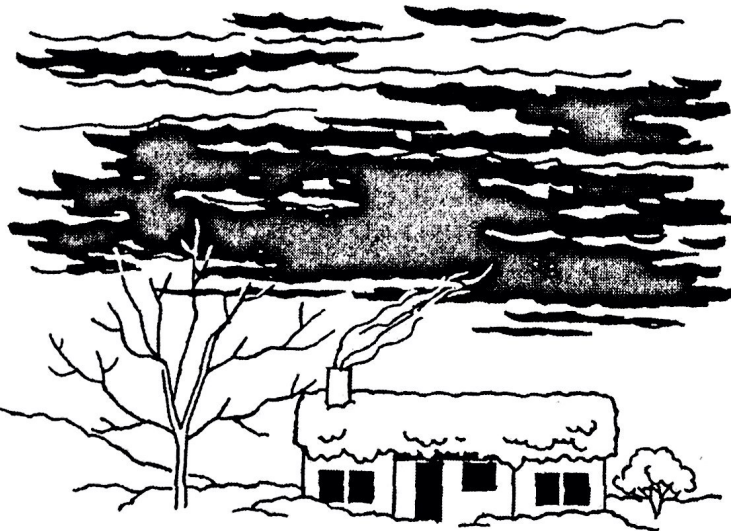
fair weather
low clouds



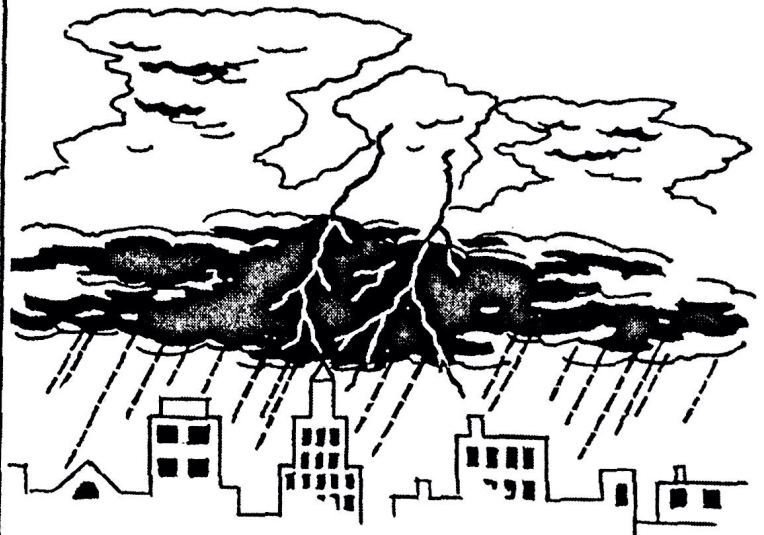
weather change
high clouds



winter weather
low clouds



stormy weather
low and high clouds



2. What weather components such as temperature, precipitation, wind, and clouds would you experience on a warm spring day? Why?

3. What weather data would you need to collect to make an accurate forecast? List four or more.

4. What are two weather clues that show a storm is coming?

- 5a. Draw a line on the graph using the data below that shows the daily noontime temperatures during the year in Salt Lake City.

